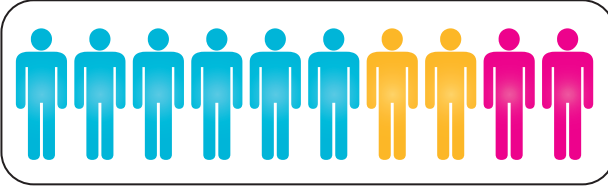
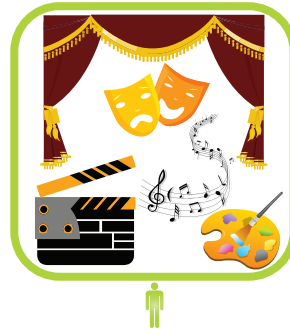


## 2. Ünite: Teen Life

Look at the visuals and read the text. Answer questions 1 - 2 according to them.

The researcher, Professor Barclay, conducts research about teenagers. His last research was about teenagers' daily routines. He compared young people in England and Korea. He asked young people about their habits. He gave them a questionnaire about their routines. Here are some results of his study from the questionnaire that he gave to the teenagers.



ENGLISH TEENAGERS



KOREAN TEENAGERS

1. Which sentence can be CORRECT according to the research results?

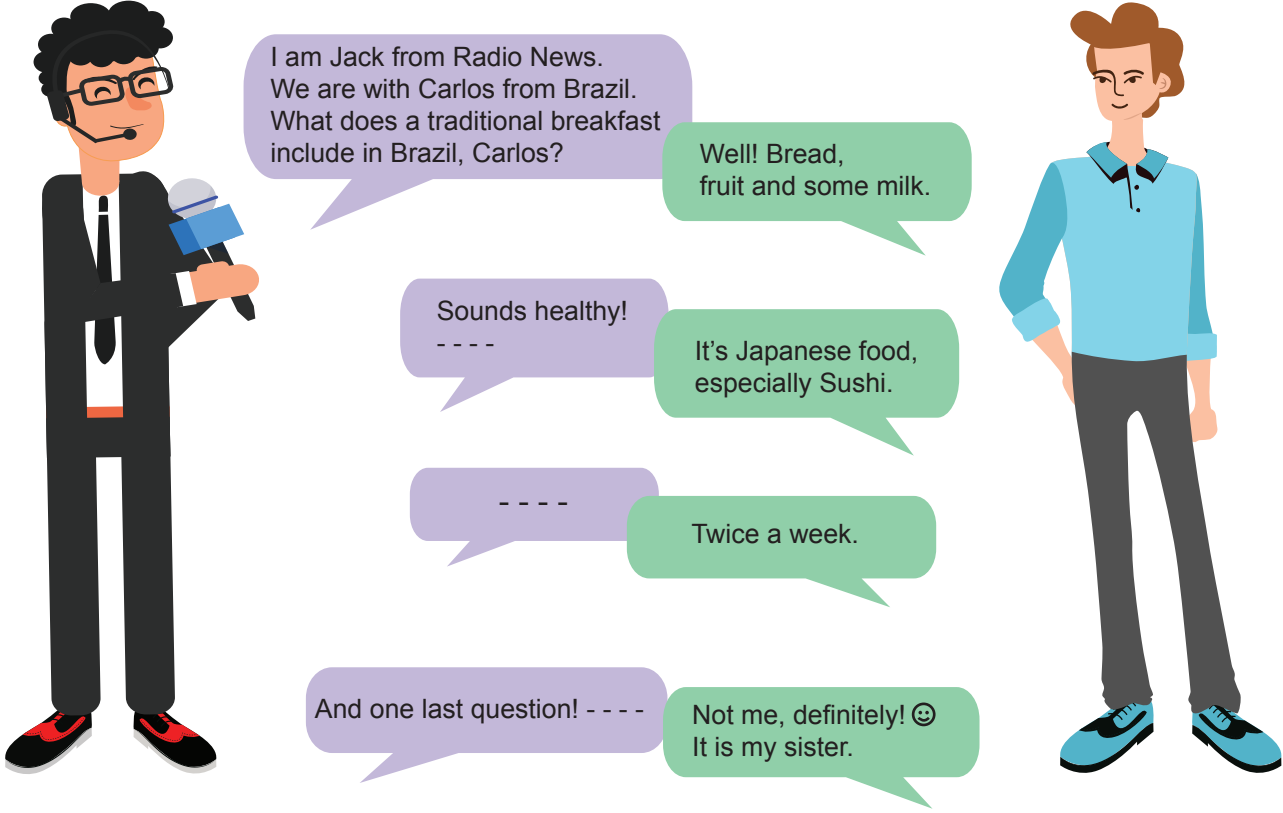
- A) Korean teens are more interested in sports than English teens are.
- B) Korean teens spend less time studying than English teens.
- C) English teens' favorite activity is going online.
- D) English teens prefer artistic activities.

2. Which can NOT be one of the questions in the questionnaire?

- A) What do you do on the weekends?
- B) Why do you like going to the movies?
- C) What is your favorite free-time activity?
- D) Which activities do you do on the Internet?

## 2. Ünite: Teen Life

Answer the question according to the dialogue between Jack and Carlos.



3. Which question DOES NOT Jack ask Carlos?

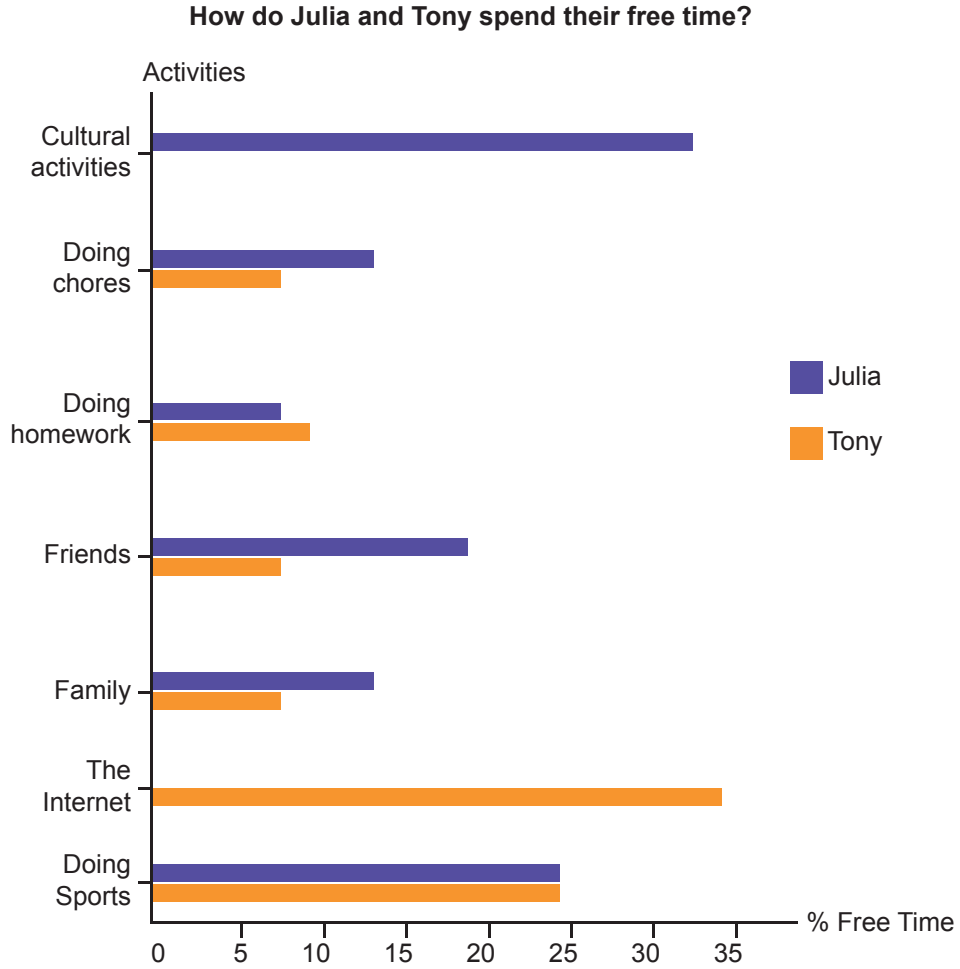
- A) How often do you eat Japanese food?
- B) Why do Japanese people like Sushi?
- C) Who cooks well in your family?
- D) What is your favorite food?

## 2. Ünite: Teen Life

Answer the question according to the information and the text below.

Tony and Julia are school friends. They have similar and different interests and responsibilities.

The table below shows how they spend their free time and the activities they enjoy doing.



4. Which of the following is NOT correct according to the information?

- A) Both Tony and Julia like physical exercise.
- B) They spend same amount of time helping housework.
- C) Julia spends more time with her friends than Tony.
- D) Tony enjoys spending time online most.

